

OFFER No.: 11/05/2011/AB/03

COMPANY:



## MOBIL CONCRETE PUMP - KCP52ZX5-225/8x8

WE OFFER YOU CONCRETE PUMP **KCP52ZX5-225/8x8** FROM OFFER **KCPPUMP.EU**

### **WORKING DIAGRAM MACHINE:**

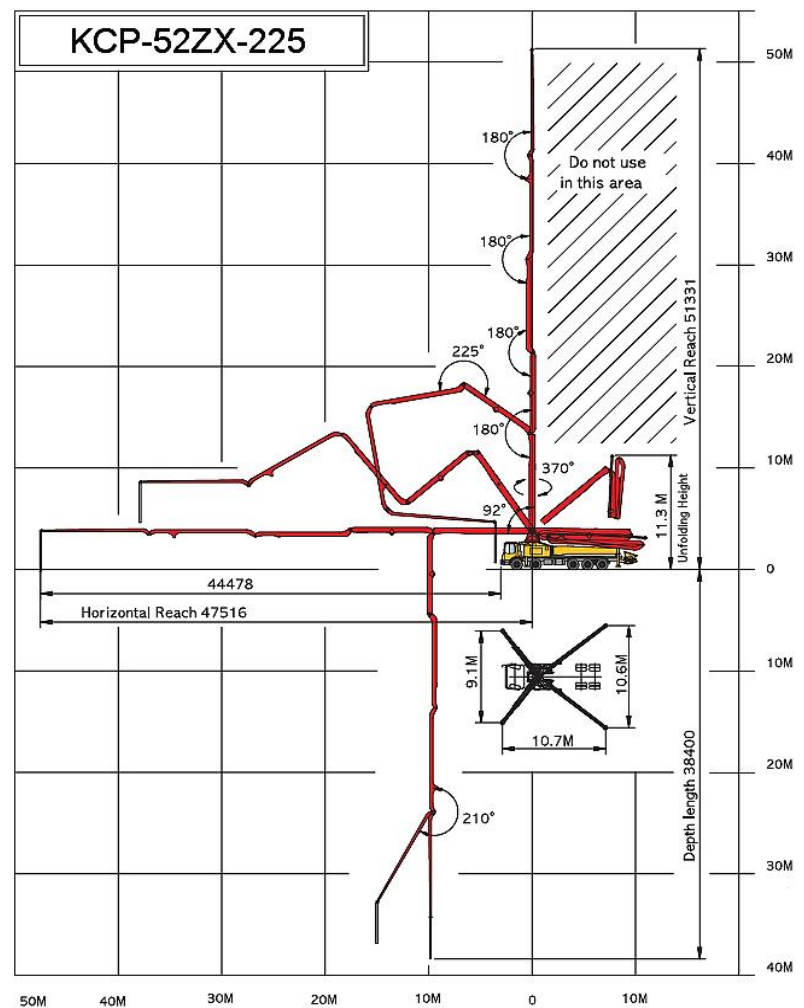
I believe that this offer will interesting for you and look forward to your response.

BEST REGARDS

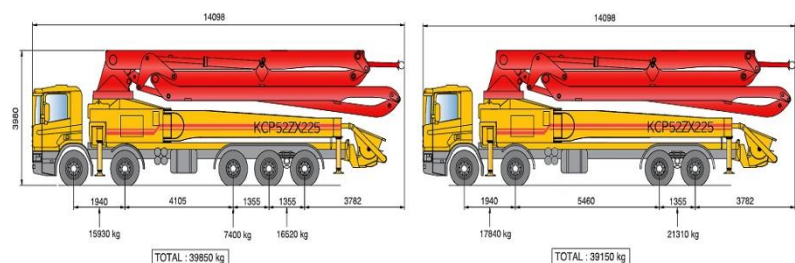


Antonín BERNARD  
+420 777764605  
[www.kcppump.eu](http://www.kcppump.eu)  
[info@kcppump.eu](mailto:info@kcppump.eu)  
[bernard@kcppump.eu](mailto:bernard@kcppump.eu)

**KCPPUMP s.r.o.**  
549 12 VYSOKOV 140  
**CZECH REPUBLIC**



### **GENERAL MACHINE DIMENSIONS:**



## **BOOM SPECIFICATIONS**

Vertical reach :	<b>51,3m</b>
Horizontal reach:	<b>47,5m</b>
Reach from front of truck:	<b>44,5m</b>
Unfolding height:	<b>11,3m</b>
Rotation:	<b>370°</b>
Regulatory proportional:	<b>HAWE</b>
Proportional boom:	<b>YES</b>
Remonte control :	<b>HBC - radio</b>
Delivery line:	<b>125mm</b>
End hose legth:	<b>4,0m</b>
Outrigger spread - front:	<b>X/9,1m</b>
Outrigger spread - rear:	<b>X/10,6m</b>
Max. outrigger weight:	<b>33500 kg</b>

## **PUMP SPECIFICATIONS**

Maximum output:	<b>225m<sup>3</sup>/hod.</b>
Concrete cilinder:	<b>280x2100mm</b>
Regulating delivery:	<b>20-225m<sup>3</sup>/hod.</b>
Concrete cylinder design:	<b>HARD CHROME</b>
Stroke per minute:	<b>29/min</b>
Concrete pressure (rod):	<b>87,5bar</b>
Hopper capacity:	<b>0,6m<sup>3</sup></b>
Hopper lubricating system	<b>CENTRÁL</b>
Diameter „S“ tube :	<b>200x180mm</b>
Hydraulic working presure:	<b>350bar</b>
Hydraulic pump:	<b>K3V140DT</b>
Water pump:	<b>GRUNDFOS</b>
Pressure / Delivery:	<b>20bar/120l/min</b>

## **STANDARD EQUIPMENT AND TECHNICAL INFORMATION**

- **5-arms boom**
- easy access to the all parts of concrete pump enabling easy and quick maintainance
- central lubrication of all machine
- single and innovative opened hydraulic systém of oil circuit with superior efficiency
- wear plate and wer ring in concrete mixture displacement made of **TUNGSTEN CARBIDE**, with a guaranteed lifetime **100.000m<sup>3</sup>** at least.
- accurate and reliable remote control **HBC**
- air conditioning, board computer, separate lubricating box
- pipe and hose holders, storage basket for accessories, end arm light
- Independent high-pressure hydraulic pump for cleaning (**250bars**)
- Independent high-pressure hydraulic pump to control the hydraulic operating members
- Distribution box **220V/1500W**

per unit EXW Czech Republic (The final end-customer price without transport costs and additional charges maybe)The KCPPUMP company reserves the right to change the technical parameters of machines offered in accordance with the specific type of boom and chassis construction





